

Features

Nichia LED chip maintains light intensity decay less than 10% within 5 years.

- Special designed reflector given highest luminance compare to the same watt.
- High Color Rendering Index (CRI) for better color accuracy appearance.
- Quality components for a long life span of ≥ 50000 Hrs.
- Works with your existing mount.

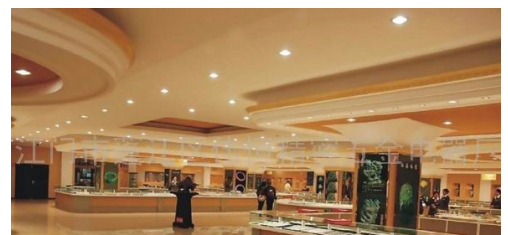
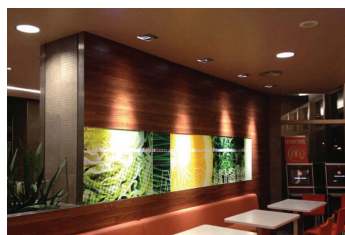
Specifications

General Informations		Operating humi.	
Product name	NEX Everest Pro SP-05	Lifespan	10% to 90%
Rated power	5W	Warranty	50,000 Hrs.
LED type	Nichia chip	Electrical Informations	
Lighting Efficiency	≥ 95 Lm/W	Input voltage	DC36V
Luminous flux	≥ 470 Lumen	Dimmable	Yes
Color temp.	Warm white (2,700K+300)	Certificates & Test reports	
CRI (Ra)	≥ 80	Certificates	CE, RoHS, TISI
Beam angle	24 Deg. (36 Deg. optional)	Test reports	LM80/ TM21
IP protection	IP20	Remark: The information contained in this document is subject to change without notice.	
Lamp base	MR16/GU5.3	* 18Hrs/Day	
Dimensions	$\varnothing 49 \times 53$ mm		
Weight	45 g.		
Housing material	Aluminum & PC cover		
Housing color	Black color		
Operating temp.	-20°C to 45°C		



Applications

Households, Meeting rooms,
Hotels, Shopping malls,
Exhibition hall, Museum



NEX Office & Showroom

Sookkamol Ratchada Building 2Floor,
410/17-23 Ratchadaphisek Rd., Samsennok,
Huay Kwang, Bangkok 10310, THAILAND

Tel. +662 204 7565
Fax. +662 938 3672
Email: info@nexledtech.com

www.nexledtech.com
www.nexinnotech.com

Ref. NEX Everest SP-05 V171206-1