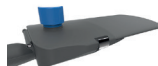


Appearance

Streamline heat sink with smooth surface, dustproof and waterproof. Unique stop block to keep the shells in right place during maintenance.



Smart Control

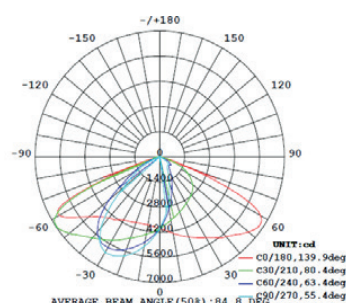
NEMA Daylight Sensor compatible for more energy saving.



Lens

Professional Lens for streets, roads, and by-pass lighting. Light efficacy up to 140lm/W.

Light Distribution



Specifications

General Informations

Product Name	NEX Avana SL-100
Rated Power	100W
LED Chip	Nichia
Luminous Efficiency	≥140 lm/W
Luminous Flux	≥14000 Lumen
Color Temp.	Cool white (5500K±500) (2500K-5500K Optional)
CRI (Ra)	≥75
Beam Angle	70Dx150D (60Dx140D, 65Dx145D Optional)
IP Protection	IP65
Dimensions	L640xW300xD117 mm
Weight	6.0Kg±0.4Kg
Housing Material	Aluminum alloy
Housing Color	Grey color
Operating Temp.	-40°C to 45°C
Operating Humi.	15% to 90%

Lifespan	100000 Hrs. (L70)
Warranty	3 Years*

Electrical Informations

Input Voltage	AC100-277V
Frequency	50/60Hz
Output Current	1.91A
Power Factor	≥0.95
Power Efficiency	≥90%
Total Harmonic (THDi)	≤15%
Surge Protection	>10kV

Certificates & Test reports

Certificates	CE, RoHS, TISI
Test Reports	LM80/TM21

Remark: The information contained in this document is subject to change without notice.
* 18Hrs/Day



NEX Office & Showroom

Sookkamol Ratchada Building 2Floor,
410/17-23 Ratchadaphisek Rd., Samsennok,
Huay Kwang, Bangkok 10310, THAILAND

Tel. +662 204 7565
Fax. +662 938 3672
Email: info@nexledtech.com

www.nexledtech.com
www.nexinnotech.com

Ref. NEX Evana SL-XX V190619-1