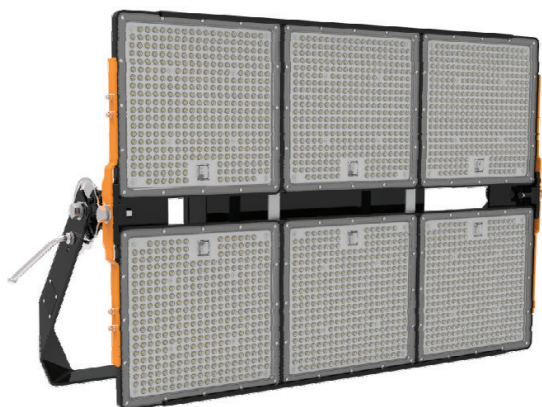


1200W LED High Mast light



Electronics-box

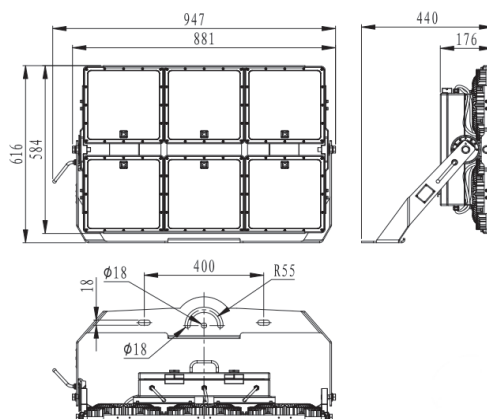
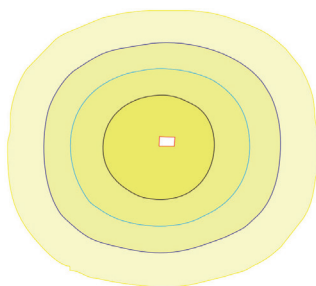
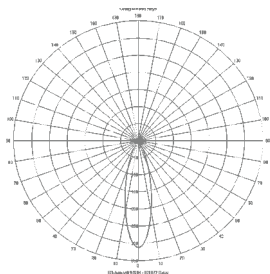
Easy Operation with the designing of the Electronics-box on the back; meanwhile it provides double protection for power supply and electric-circuit parts inside.

Bracket

The tool- less designing of Compact S with adjustable mounting bracket gets a breakthrough, which provides more convenience way to different angle.

LED

Adopts imported LED chips with over 100,000hrs TM-21 tested lifetime, and the high performance LED design delivering up to 145 lumens per watt.



Specifications

General Informations

Product name	NEX Aston HM-1200
Rated power	1200W
LED chip	Nichia
Luminous efficiency	≥145 Lm/W
Luminous flux	≥174000 Lumen
Color temp.	Cool white (5000K±500)
CRI (Ra)	≥75
Beam angle	30 Deg. (60D, 20D Optional)
IP protection	IP65
Replacement	2500-3500W Traditional lamp
Dimensions	L947 x W616 x H440 mm
Weight	36 Kg ±1.0Kg
Housing material	Aluminum alloy
Housing color	Black
Operating temp.	-40°C to 40°C
Operating humi.	15% to 90%
Lifespan	100,000 Hrs. (L70)
Warranty	3 Years*

Electrical Informations

Input voltage	AC100-277V
Frequency	50/60Hz
Output current	15.7A (Constant current)
Power factor	≥0.95
Power efficiency	≥94%
Total harmonic (THD)	≤10%
Surge protection	10KV

Certificates & Test reports

Certificates	CE, RoHS, TISI
Test reports	LM80/TM21, LM79

Remark: The information contained in this document is subject to change without notice.
* 18Hrs/Day

