



## Electronics-box

Easy Operation with the designing of the Electronics-box on the back; meanwhile it provides double protection for power supply and electric-circuit parts inside.



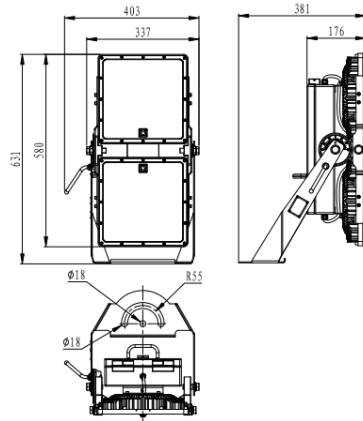
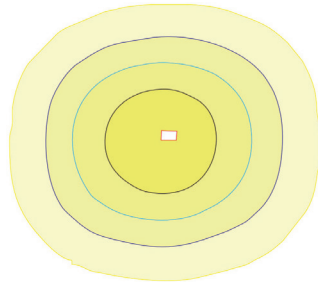
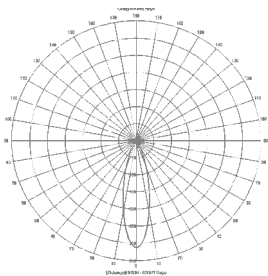
## Bracket

The tool-less designing of Compact S with adjustable mounting bracket gets a breakthrough, which provides more convenience way to different angle.



## LED

Adopts imported LED chips with over 100,000hrs TM-21 tested lifetime, and the high performance LED design delivering up to 145 lumens per watt.



## Specifications

### General Informations

Product name	NEX Aston HM-400
Rated power	400W
LED chip	Nichia
Luminous efficiency	≥145 lm/W
Luminous flux	≥58000 lumen
Color temp.	Cool white (5700K+500)
CRI (Ra)	≥75
Beam angle	30 Deg. (60D, 20D Optional)
IP protection	IP65
Replacement	800-1200W Traditional lamp
Dimensions	L631 x W403 x D381 mm
Weight	14.5 Kg ±1.0Kg
Housing material	Aluminum alloy
Housing color	Black
Operating temp.	-40°C to 40°C
Operating humi.	10% to 90%
Lifespan	100,000 Hrs. (L70)
Warranty	3 Years*

### Electrical Informations

Input voltage	AC 100-277V
Frequency	50/60Hz
Output current	5.4A
Power factor	≥0.95
Power efficiency	≥93%
Total harmonic (THD)	≤10%
Surge protection	10KV

### Certificates & Test reports

Certificates	CE, RoHS, TISI
Test reports	LM80/ TM21

Remark: The information contained in this document is subject to change without notice.  
\* 18Hrs/Day



## NEX Office & Showroom

Sookkamol Ratchada Building 2Floor,  
410/17-23 Ratchadaphisek Rd., Samsennok,  
Huay Kwang, Bangkok 10310, THAILAND

Tel. +662 204 7565  
Fax. +662 938 3672  
Email: info@nexledtech.com

www.nexledtech.com  
www.nexinnotech.com